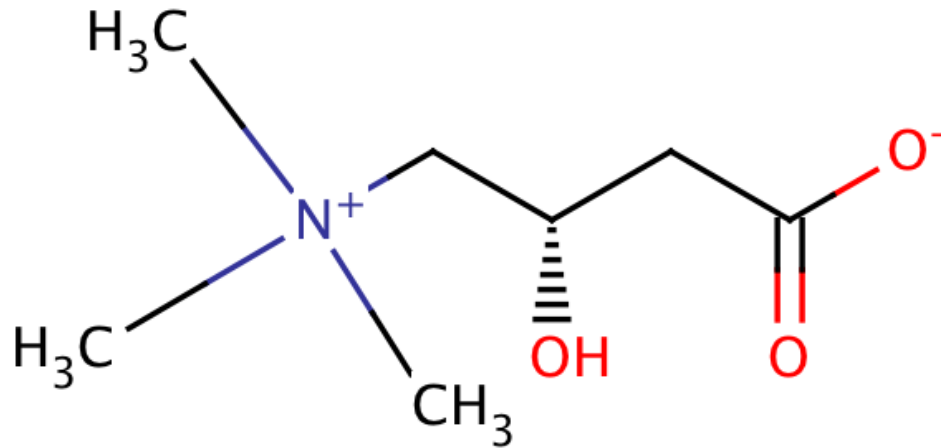


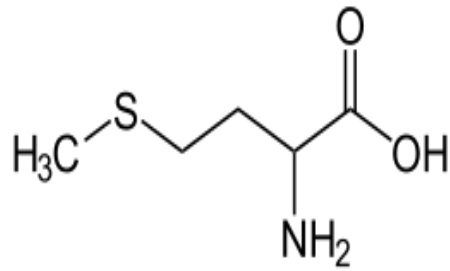
# Karnitin

Vísindavøka 2013

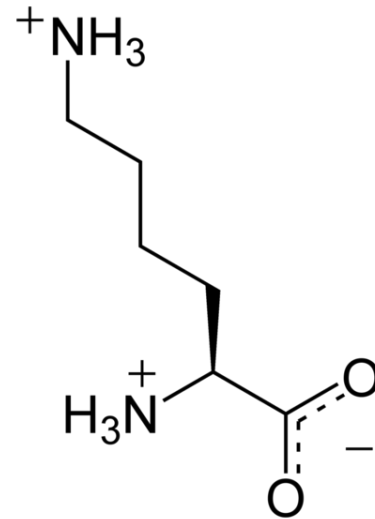
# L-carnitine



# Lysine og methionin



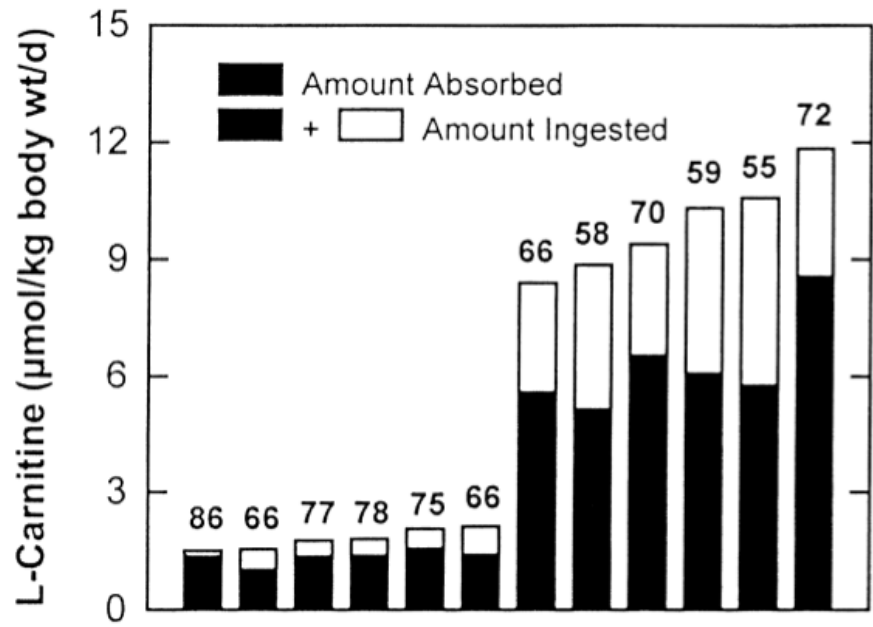
Methionin

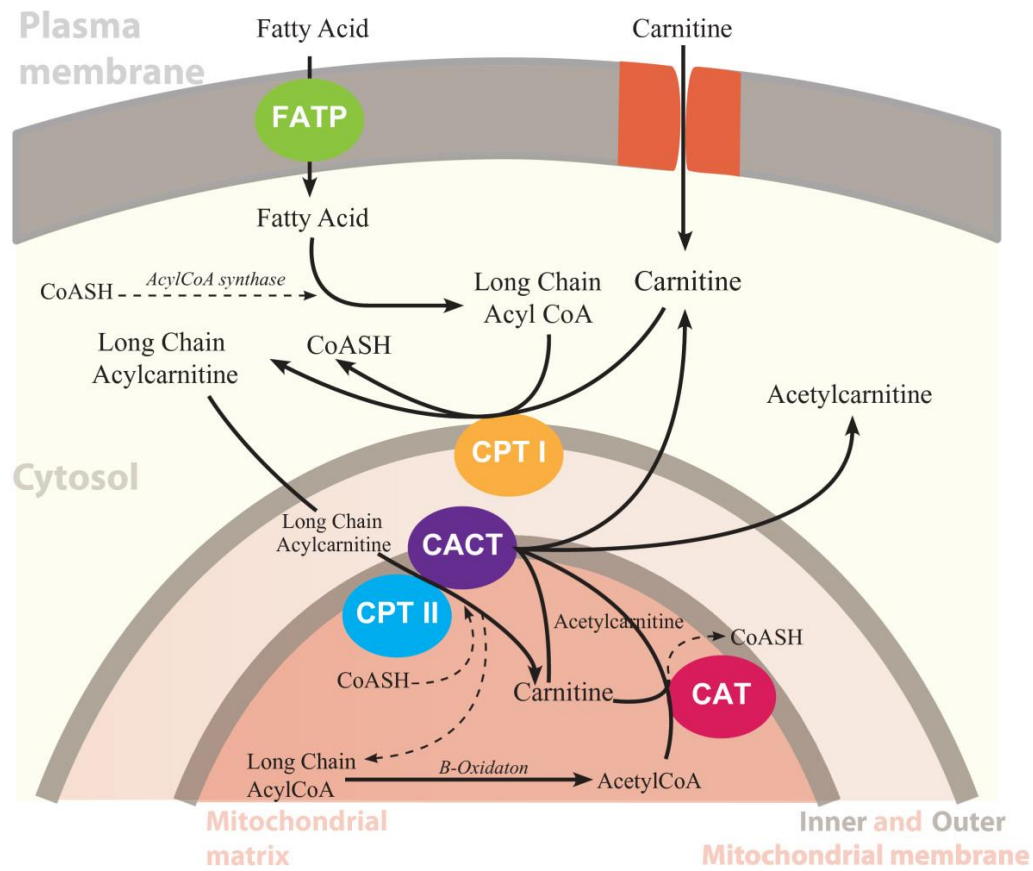


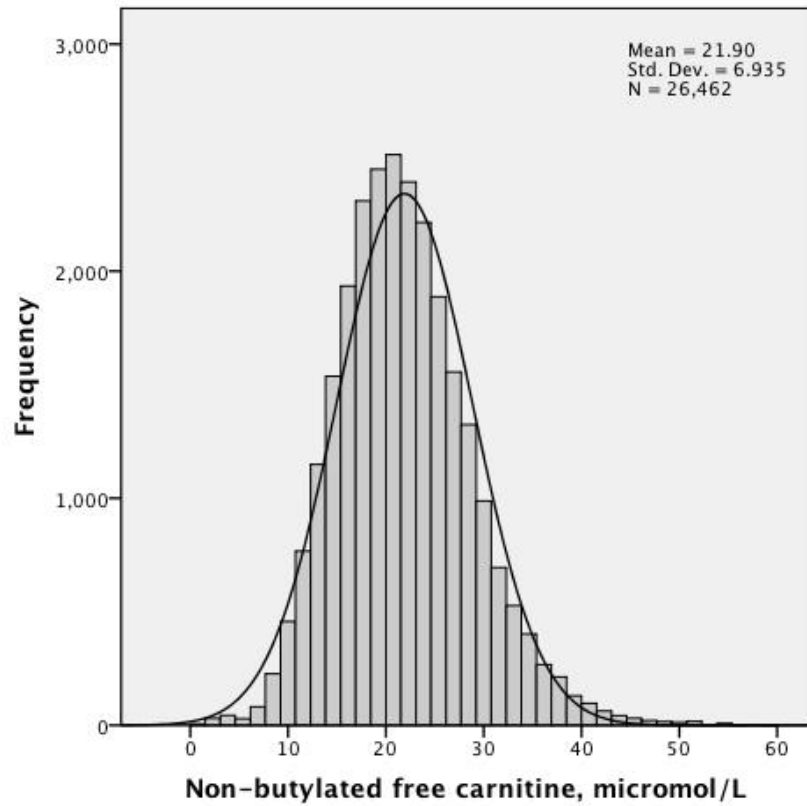
Lysine

# Karnitin í fæðslu

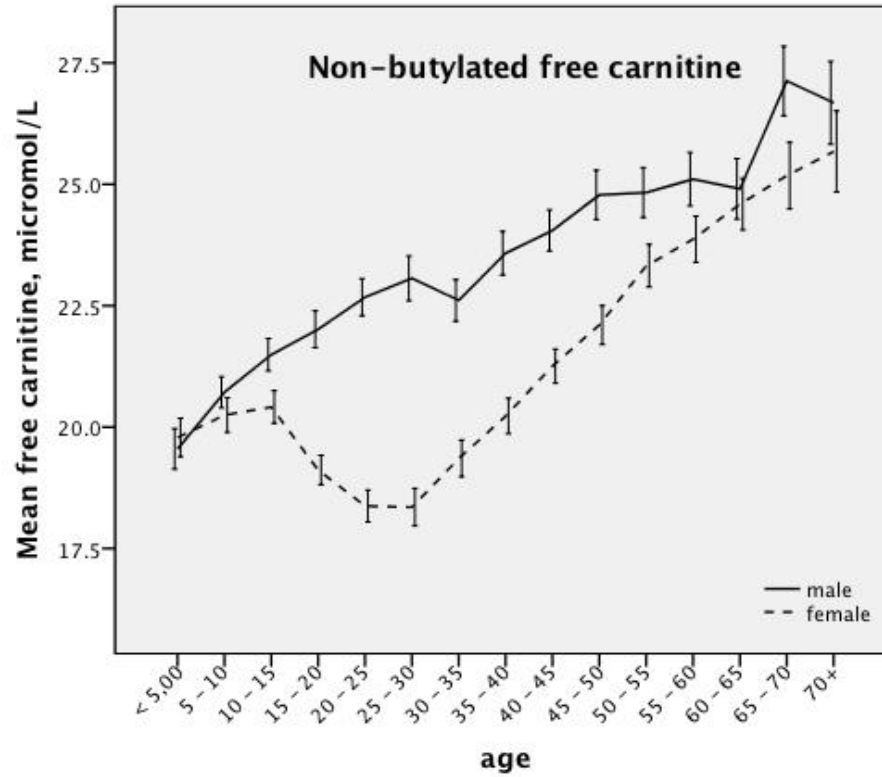
Fæði	Karnitin mongd (mg)
Oksasteik kókað 110 gram	56-162
Hakkikjöt kókað 110 gram	87-99
Mjólk 1 koppur	8
Toskur kókaður 110 gram	4-7
Høsnarungi kókaður 110 gram	3-5
Ísur 1/2 kopp	3
Ostur 50 gram	2
Hveitibreyð 2 flísar	0,2
Asparges kókað	0,1



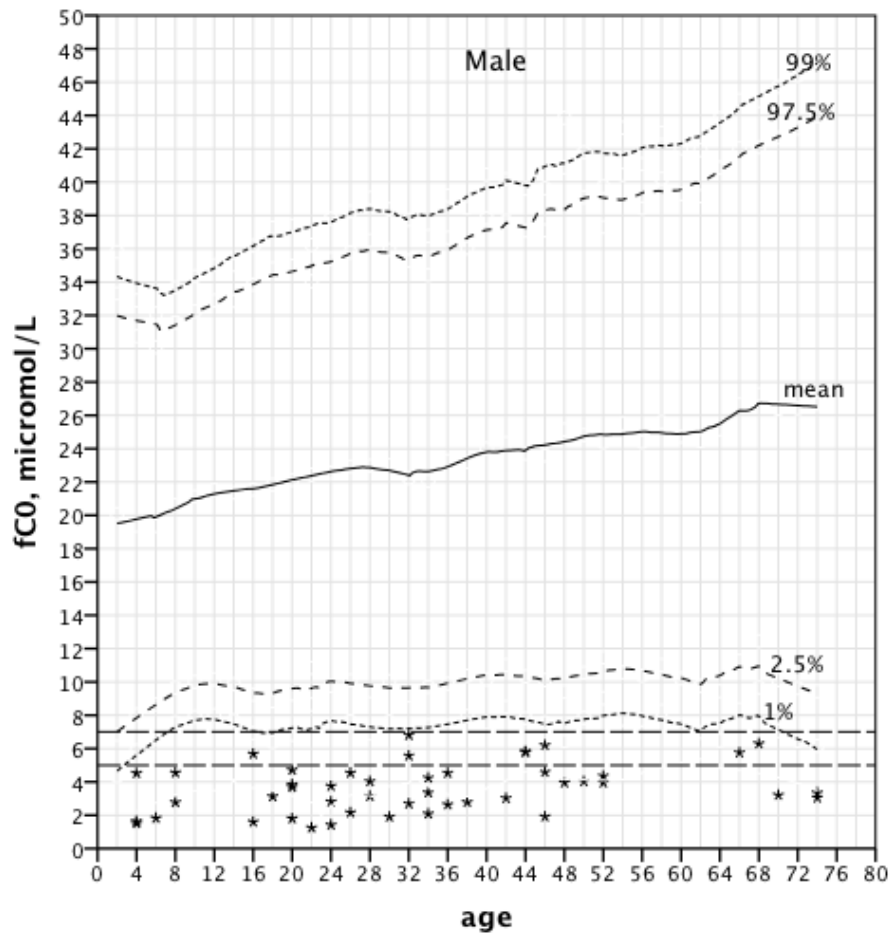


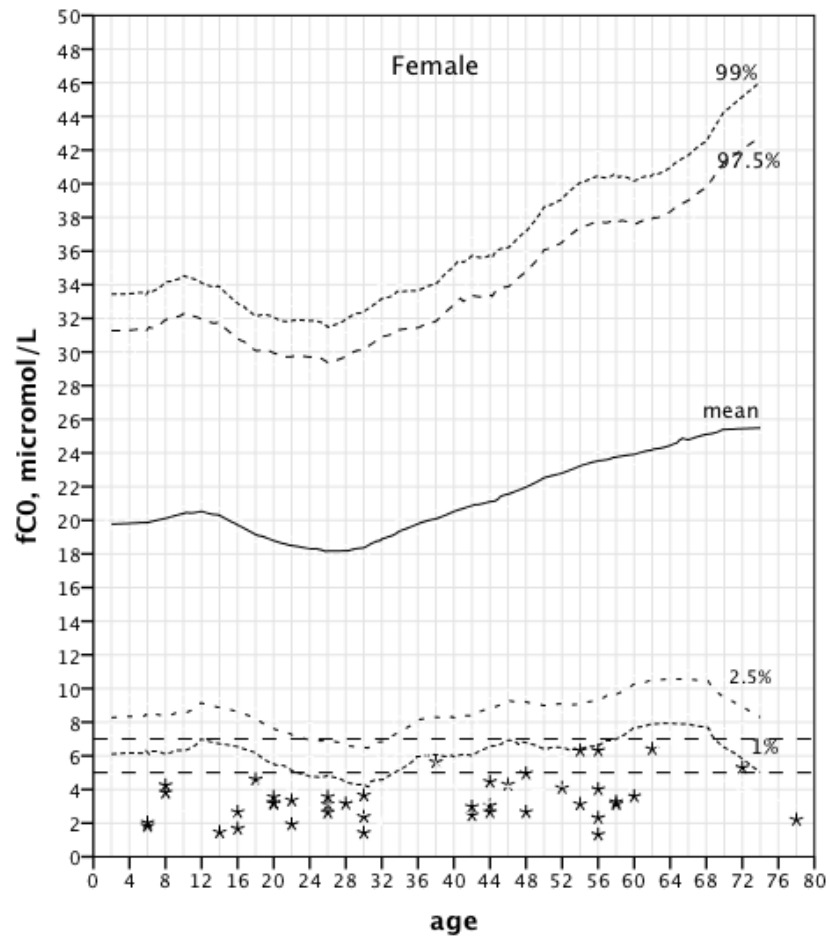


# Menn/kvinnur









Summary of symptoms and characteristics.

<b>Subject #</b>	<b>1</b>	<b>2</b>	<b>3</b>	<b>4</b>	<b>5</b>	<b>6</b>
Age at death (years)	Alive	26	43	1	3,5	30
<i>SLC22A5</i> mutations	c.95A>G/ c.95A>G	c.95A>G/ c.95A>G	c.95A>G/ c.95A>G	c.95A>G/ c.95A>G	c.95A>G/ c.95A>G	c.95A>G/ c.95A>G
Pivalic acid exposure before symptoms	+	+	+	+	+	+
Documented cardiac arrhythmia	+	+	+	+	Not monitored	+
Encephalopathy	+	+	+	+	+	+
Physical activity when suffering cardiac arrhythmia	Rest	Rest	Rest	Rest	Not monitored	Rest
In-hospital death	Survived	+	+	+	+	+

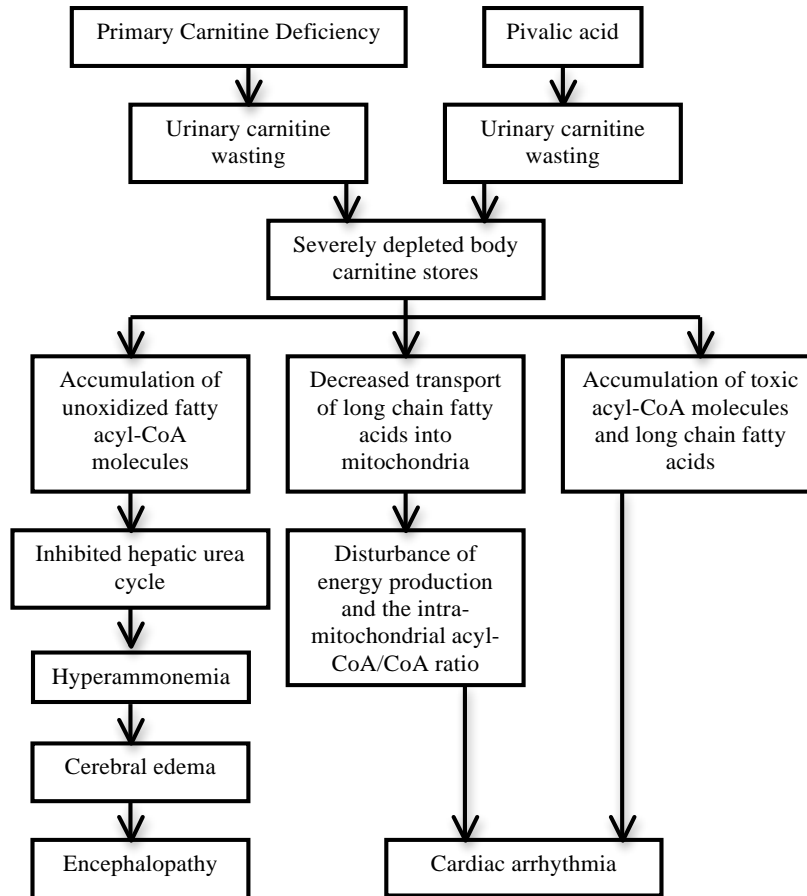


Fig.1. The authors' hypothesis of the effects of pivalic acid exposure in patients suffering from PCD who develop symptoms of encephalopathy and cardiac arrhythmia.

Takk fyri!